

## QUESTIONNAIRE FOR DESIGN OF STINGER SYSTEMS

Company: \_\_\_\_\_  
 Contact person: \_\_\_\_\_  
 Street: \_\_\_\_\_  
 Zip code / city: \_\_\_\_\_  
 Phone: \_\_\_\_\_  
 Fax: \_\_\_\_\_  
 e-Mail: \_\_\_\_\_ @ \_\_\_\_\_

**Contact:**

Norbert Greiwe  
 ngreiwe@wabtec.com  
 Tel. +49 59 23 81 296

### VARIATION OF THE STINGER SYSTEM

1.  Variation I  Variation II  Variation III  Variation IIII (cf. addendum)

### STINGER SYSTEM & DEVICE DATA

2.	Lenght of the required stinger system	_____ m
3.	Quantity of stinger systems	_____ pieces
4.	Quantity of poles for power	_____ poles
5.	Quantity of poles for control	_____ poles
6.	Voltage / current	_____ V / _____ A
7.	Duty cycle	_____ % ED
8.	Frequency by AC	_____ Hz
9.	Quantity of stinger trolleys: per rail / total	_____ / _____
10.	Type or design of the plug connection	_____
11.	Type of voltage	<input type="checkbox"/> DC <input type="checkbox"/> AC <input type="checkbox"/> 3-phase current

### AMBIENT CONDITIONS

12.	Ambient temperature	- _____ °C up to _____ °C
13.	Environmental influences	_____ _____ _____ _____

### ACCESSORIES / SUPPLEMENTARY NOTES

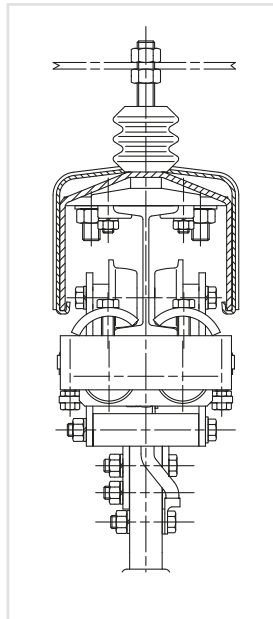
14.	_____ _____ _____ _____ _____ _____ _____
-----	---

## QUESTIONNAIRE

### FOR DESIGN OF STINGER-SYSTEMS

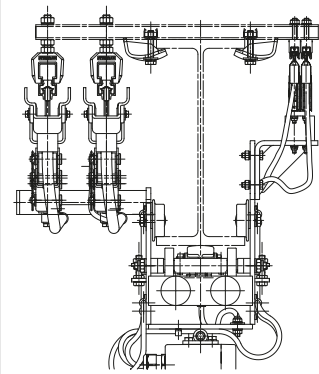
#### VERSION I

- one pole version with an I-beam
- for 600 A and 1000 A by max. 1 minute
- for installation out of the handarea



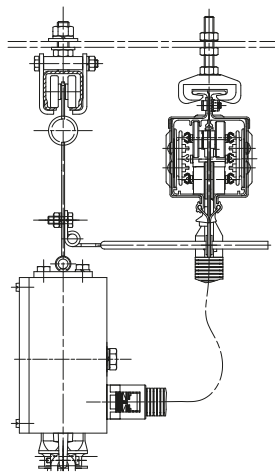
#### VERSION II

- single insulated conductor bar
- multipole possible (1 up to unlimited number of poles)
- from 100 A - 2200 A per pole
- for main power, auxiliary current and control



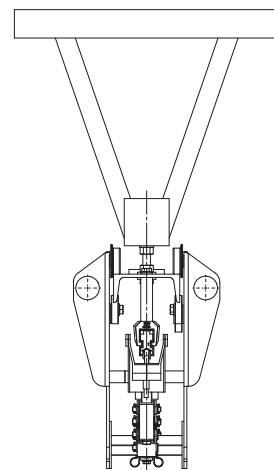
#### VERSION III

- combi system
- c-rail for support the connecting box and enclosed conductor bar for power and control
- by the multipole conductor bar it is possible to switch the copper profile inside to a one pole system
- for power and control



#### VERSION IIII

- u-shape as runtrack and support
- single insulated conductor bar up to 2200 A
- for power



#### OPTIONS & SOLUTIONS

- to the customer request
- to the building at side
- mix from different conductor bars
- specials at site

**QUESTIONNAIRE**  
SKETCH SHEET

